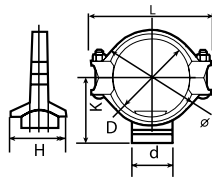




Conexión "T" mecánica ranurada

Características:

- Para sistemas de protección de incendios.
- Provee una rápida y fácil salida normal ranurada.



Medida nominal pulg	Tornillo No. Medida mm	D	Dimensiones pulg/mm			Orificio pulg/mm
			L	K	H	d
3 x 2	2-M12 x 75	5.80/147.4	6.94/176.2	3.279/83.3	3.913/99.4	2.5 / 63
4 x 1/2	2 - M12x75	6.94/176.2	7.402/188	3.78/96	4.06/103.2	2.5 /63
4 x 2	2 - M12 x 65	5.512/140	7.402/188	3.661/93	3.819/97	2.402/61
4 x 2.5	2 - M12 x 65	5.512/140	7.402/188	3.661/93	4.409/112	3.189/81
4 x 3	2 - M12 x 65	5.512/140	9.5 /240	3.661/93	4.803/122	3.386/86
6 x 2	2 - M16 x 100	6.4 /165	9.38/238.2	4.76 /121	4.06 /103.2	2.5 /63
6 x 2	2 - M16 x 100	9.38/238.2	9.38/238.2	4.82/122.5	4.06/103.2	2.5 /63
6 x 3	2 - M16 x 100	9.38/238.2		4.82/122.5	5.16/131.1	3.4 /86

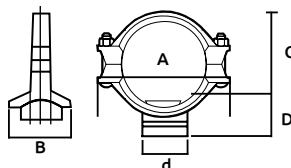
Código	Medida nominal		Diámetro exterior		Presión máxima de trabajo		Precio
	pulg.	mm	pulg.	mm	PSI	MPa	
14COPLES121CH	3X2	80 x 50	3.500 x 2.375	88.9 x 60.3	300 / 2.07		\$240.12
14COPLES097CH	4x1 1/2	100 x 40	4.500 x 1.900	114.3 x 48.3	300 / 2.07		\$230.84
14COPLES070CH	4 x 2	100 x 50	4.500 x 2.375	114.3 x 60.3	300 / 2.07		\$240.12
14COPLES071CH	4 x 2.5	100 x 65	4.500 x 2.996	114.3 x 76.1	300 / 2.07		\$249.40
14COPLES072CH	4 x 3	100 x 80	4.500 x 3.500	114.3 x 88.9	300 / 2.07		\$305.08
N 14COPLES149CH	6"x1 1/2"	150 x 40	6.625 x 1.900	168.3 x 48.3	300 / 2.07		\$402.52
14COPLES093CH	6 x 2	150 x 50	6.500 x 2.375	165.1 x 60.3	300 / 2.07		\$354.96
14COPLES096CH	6x2	150 x 50	6.625 x 2.375	168.3 x 60.3	300 / 2.07		\$414.12
14COPLES098CH	6x3	150 x 80	6.625 x 3.500	168.3 x 88.9	300 / 2.07		\$417.60
N 14COPLES151CH	8"x2"	200 x 50	8.625 x 2.375	219.1 x 60.3	300 / 2.07		\$749.36
N 14COPLES150CH	8"x2 1/2	200 x 65	8.625 x 2.875	219.1 x 73.0	300 / 2.07		\$749.36

Unidad: 1 pieza. Master: 1 pieza.

Conexión "T" mecánica ranurada

Características:

- Para sistemas de protección de incendios.
- Provee una rápida y fácil salida ranurada.
- Cuerpo de hierro con pintura inhibidora de corrosión.



Medida nominal pulg	Tornillo No. Medida mm	A	Dimensiones pulg/mm			Orificio pulg/mm
			B	C	D	d
2 x 1	2-M10 x 60	4.5/114	2.72/69	2.64/67.10	1.52/38.6	1.5/38
2 x 1.25	2-M10 x 60	4.5/114	3.01/76.5	2.62/66.6	1.52/38.6	1.8/46
2 x 1.5	2-M10 x 60	4.5/114	3.01/76.5	2.62/66.6	1.52/38.6	1.8/46
2.5 x 1	2-M10 x 70	4.98/126.4	2.73/69.4	2.92/74.1	1.8/45.6	1.5/38
2.5 x 1.25	2-M10 x 70	4.98/126.4	3.02/76.8	2.92/74.1	1.8/45.6	1.8/46
2.5 x 1.5	2-M10 x 70	4.98/126.4	3.02/76.8	2.92/74.1	1.8/45.6	1.8/46
3 x 1	2-M12 X 75	5.8/147.4	2.83/72	3.24/82.3	2.12/53.8	1.5/38
3 x 1.25	2-M12 X 75	5.8/147.4	3.39/86	3.24/82.3	2.12/53.8	2/51
3 x 1.5	2-M12 X 75	5.8/147.4	3.39/86	3.24/82.3	2.12/53.8	2/51
4 x 1	2-M12 X 75	6.94/176.2	2.85/72.4	3.78/96	2.62/66.5	1.5/38
4 x 1.25	2-M12 X 75	6.94/176.2	3.4/86.4	3.78/96	2.62/66.5	2/51

Código	Medida nominal		Diámetro exterior		Presión máxima de trabajo		Precio
	pulg.	mm	pulg.	mm	PSI	MPa	
14COPLES125CH	2x1	50 x 25	2.375 x 1.315	60.3 x 33.7	300 / 2.07		\$179.80
14COPLES126CH	2x1.25	50 x 32	2.375 x 1.660	60.3 x 42.4	300 / 2.07		\$126.44
14COPLES127CH	2x1.5	50 x 40	2.375 x 1.900	60.3 x 48.3	300 / 2.07		\$133.40
14COPLES128CH	2.5x1	65 x 25	2.875 x 1.315	73.0 x 33.7	300 / 2.07		\$161.24
14COPLES129CH	2.5x1.25	65 x 32	2.875 x 1.660	73.0 x 42.4	300 / 2.07		\$205.32
14COPLES130CH	2.5x1.5	65 x 40	2.875 x 1.900	73.0 x 48.3	300 / 2.07		\$170.52
14COPLES131CH	3x1	80 x 25	3.500 x 1.315	88.9 x 33.7	300 / 2.07		\$174.00
14COPLES132CH	3x1.25	80 x 32	3.500 x 1.660	88.9 x 42.4	300 / 2.07		\$220.40
14COPLES133CH	3x1.5	80 x 40	3.500 x 1.900	88.9 x 48.3	300 / 2.07		\$220.40
14COPLES134CH	4x1	100 x 25	4.500 x 1.315	114.3 x 33.7	300 / 2.07		\$226.20
14COPLES135CH	4x1.25	100 x 32	4.500 x 1.660	114.3 x 42.4	300 / 2.07		\$230.84

Unidad: 1 pieza. Master: 1 pieza.

