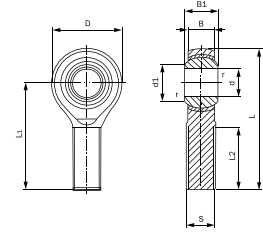


Cabeza de rótula macho POSB

- Características:
 • Marca: GIM (G)
 • Marca: IKO (I)



(pulg)



| Código | Número | Cuerda | Peso | Thread class 3A | | Dimensiones pulg (mm) | | | | | | | Diam. bola inch | Capacidad dinámica de carga básica | | Precio | |
|---------------|-------------|-----------|--------|--------------------|------------------|-----------------------|------------------|------------------|------------------|-------------------|-------------------|------------------|-----------------|------------------------------------|--------|--------|------------|
| | | | | d | S | D | B | B1 | d1 | L | L1 | L2 | | r | CD lbf | | CD lbf |
| 13POSB3—IK | (I) POSB-3 | Derecha | 14 g | 0.1900 (4.826) | 0.1900 -32UNF | 0.625 (15.88) | 0.250 (6.35) | 0.312 (7.92) | 0.306 (7.77) | 1.563 (39.70) | 1.250 (31.75) | 0.750 (19.05) | 0.012 (0.3) | 7/16 | 780 | 1120 | \$491.84 |
| 13POSB4—IK | (I) POSB-4 | Derecha | 23 g | 0.2500 (6.350) | 0.2500 -28UNF | 0.750 (19.05) | 0.281 (7.14) | 0.375 (9.53) | 0.355 (9.02) | 1.937 (49.20) | 1.568 (39.67) | 1.000 (25.40) | 0.020 (0.5) | 33/64 | 1030 | 2040 | \$392.08 |
| 13POSB4I—TA | (G) POSB-4 | Izquierda | | | | | | | | | | | | | | | \$111.36 |
| 13POSB5—IK | (I) POSB-5 | Derecha | 36 g | 0.3125 (7.938) | 0.3125 -24UNF | 0.875 (22.23) | 0.344 (8.74) | 0.437 (11.10) | 0.447 (11.35) | 2.312 (58.72) | 1.875 (47.63) | 1.250 (31.75) | 0.020 (0.5) | 5/8 | 1530 | 3270 | \$467.48 |
| 13POSB5I—TA | (G) POSB-5 | Izquierda | | | | | | | | | | | | | | | \$114.84 |
| 13POSB6—IK | (I) POSB-6 | Derecha | 54 g | 0.3750 (9.525) | 0.3750 -24UNF | 1.000 (25.40) | 0.406 (10.31) | 0.500 (12.70) | 0.517 (13.13) | 2.438 (61.93) | 1.938 (49.23) | 1.250 (31.75) | 0.020 (0.5) | 23/32 | 2080 | 4980 | \$515.04 |
| 13POSB6I—TA | (G) POSB-6 | Izquierda | | | | | | | | | | | | | | | \$153.12 |
| 13POSB7—IK | (I) POSB-7 | Derecha | 77 g | 0.4375 (11.112) | 0.4375 -20UNF | 1.125 (28.58) | 0.437 (11.10) | 0.562 (14.27) | 0.586 (14.88) | 2.688 (68.28) | 2.125 (53.98) | 1.375 (34.93) | 0.020 (0.5) | 13/16 | 2520 | 6020 | \$593.92 |
| 13POSB7I—TA | (G) POSB-7 | Izquierda | | | | | | | | | | | | | | | \$156.60 |
| 13POSB8D—TA | (G) POSB-8 | Derecha | 122 g | 0.5000 (12.700) | 0.5000 -20UNF | 1.312 (33.32) | 0.500 (12.70) | 0.625 (15.88) | 0.698 (17.73) | 3.094 (78.59) | 2.438 (61.93) | 1.500 (38.10) | 0.020 (0.5) | 15/16 | 3300 | 8370 | \$204.16 |
| 13POSB8I—TA | (G) POSB-8 | Izquierda | | | | | | | | | | | | | | | \$191.40 |
| 13POSB10—IK | (I) POSB-10 | Derecha | 186 g | 0.6250 (15.875) | 0.6250 -18UNF | 1.500 (38.10) | 0.562 (14.27) | 0.750 (19.05) | 0.839 (21.31) | 3.375 (85.73) | 2.625 (66.68) | 1.625 (41.28) | 0.020 (0.5) | 1.1/8 | 4500 | 9050 | \$1,070.68 |
| 13POSB10D—TA | (G) POSB-10 | Derecha | | | | | | | | | | | | | | | \$262.16 |
| 13POSB10I—TA | (G) POSB-10 | Izquierda | | | | | | | | | | | | | | | \$229.68 |
| 13POSB12—IK | (I) POSB-12 | Derecha | 295 g | 0.7500 (19.050) | 0.7500 -16UNF | 1.750 (44.45) | 0.687 (17.45) | 0.875 (22.23) | 0.978 (24.84) | 3.750 (95.25) | 2.875 (73.03) | 1.750 (44.45) | 0.020 (0.5) | 1.5/16 | 6410 | 12700 | \$1,208.72 |
| 13POSB12D—TA | (G) POSB-12 | Derecha | | | | | | | | | | | | | | | \$419.92 |
| 13POSB12I—TA | (G) POSB-12 | Izquierda | | | | | | | | | | | | | | | \$419.92 |
| 13POSB16D—TA | (G) POSB-16 | Derecha | 1129 g | 1.0000 (25.400) | 1.0000 -12UNF | 2.750 (69.85) | 1.000 (25.40) | 1.375 (34.93) | 1.269 (32.23) | 5.500 (139.78) | 4.125 (104.78) | 2.125 (53.98) | 0.020 (0.5) | 1.7/8 | 13300 | 25300 | \$701.80 |
| 13POSB16D25TA | (G) POSB-16 | Derecha | | | | | | | | | | | | | | | \$1,218.00 |
| 13POSB16I25TA | (G) POSB-16 | Izquierda | | | | | | | | | | | | | | | \$1,035.88 |
| 13POSB16I—TA | (G) POSB-16 | Derecha | | | | | | | | | | | | | | | \$1,038.20 |

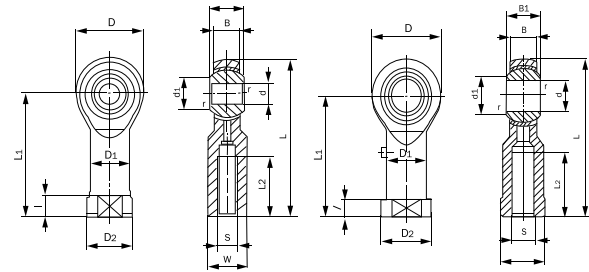
Unidad: 1 pieza Master: 1 pieza

Cabeza de rótula hembra PHS

- Características:
 • Marca: GIM (G)



(mm)



| Código | Número | Cuerda | Peso | d | Rosca | Dimensiones pulg (mm) | | | | | | | Diam. bola inch | Cap. dinámica de carga básica | | Precio | | | | | |
|-------------|--------|-----------|--------|----|-----------|-----------------------|------|----|------|----|----|----|-----------------|-------------------------------|------|--------|-----|-------|--------|--------|----------|
| | | | | | | D | B | B1 | d1 | L | L1 | L2 | | W | D1 | | D2 | r | CD lbf | CD lbf | |
| 13PHS4D—TA | PHS-4 | Derecha | 11.9 g | 4 | M 4X0.7 | 14 | 5.3 | 7 | 6.5 | 31 | 24 | 12 | 4 | 8 | 8 | 9.5 | 0.3 | 3/8 | 250 | 47 | \$49.88 |
| 13PHS4I—TA | PHS-4 | Izquierda | | | | | | | | | | | | | | | | | | | \$49.88 |
| 13PHS5D—TA | PHS-5 | Derecha | 16.5 g | 5 | M 5X0.8 | 16 | 6 | 8 | 7.7 | 35 | 27 | 14 | 4 | 9 | 9 | 11 | 0.3 | 7/16 | 330 | 580 | \$49.88 |
| 13PHS6D—TA | PHS-6 | Derecha | 25 g | 6 | M 6X1 | 18 | 6.75 | 9 | 9 | 39 | 30 | 14 | 5 | 11 | 10 | 13 | 0.3 | 1/2 | 430 | 710 | \$62.64 |
| 13PHS6I—TA | PHS-6 | Izquierda | | | | | | | 10.4 | | | | | | | | | | | | \$62.64 |
| 13PHS8D—TA | PHS-8 | Derecha | 43 g | 8 | M 8X1.25 | 22 | 9 | 12 | 12.9 | 47 | 36 | 17 | 5 | 14 | 12.5 | 16 | 0.3 | 5/8 | 710 | 1040 | \$77.72 |
| 13PHS8I—TA | PHS-8 | Izquierda | | | | | | | | | | | | | | | | | | | \$83.52 |
| 13PHS10D—TA | PHS-10 | Derecha | 72 g | 10 | M 10X1.5 | 26 | 10.5 | 14 | 15.4 | 56 | 43 | 21 | 6.5 | 17 | 15 | 19 | 0.3 | 3/4 | 1000 | 1360 | \$90.48 |
| 13PHS10I—TA | PHS-10 | Izquierda | | | | | | | | | | | | | | | | | | | \$90.48 |
| 13PHS12D—TA | PHS-12 | Derecha | 107 g | 12 | M 12X1.75 | 30 | 12 | 16 | 16.9 | 65 | 50 | 24 | 6.5 | 19 | 17.5 | 22 | 0.3 | 7/8 | 1330 | 1730 | \$142.68 |
| 13PHS12I—TA | PHS-12 | Izquierda | | | | | | | | | | | | | | | | | | | \$142.68 |
| 13PHS14D—TA | PHS-14 | Derecha | 160 g | 14 | M 14X2 | 34 | 13.5 | 19 | 19.4 | 74 | 57 | 27 | 8 | 22 | 20 | 25 | 0.3 | 1 | 1710 | 2130 | \$128.76 |
| 13PHS16D—TA | PHS-16 | Derecha | 210 g | 16 | M 16X2 | 38 | 15 | 21 | 83 | 64 | 33 | 8 | 8 | 22 | 22 | 27 | 0.3 | 1.1/8 | 2140 | 2590 | \$162.40 |
| 13PHS16I—TA | PHS-16 | Izquierda | | | | | | | | | | | | | | | | | | | \$170.52 |
| 13PHS25D—TA | PHS-25 | Derecha | | | M 24X2 | | | | | | | | | | | | | | | | \$518.52 |
| 13PHS25I—TA | PHS-25 | Izquierda | | | M24X2 | | | | | | | | | | | | | | | | \$518.52 |

Unidad: 1 pieza Master: 1 pieza