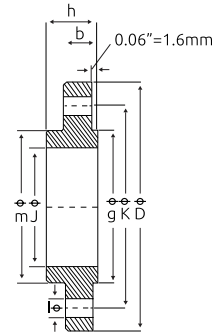


## Brida SLIP ON

Características:

- Cumple con el estándar ANSI B16.5 • Fundición de hierro • Terminado: Acabado negro

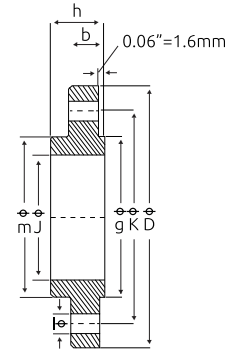


Código	Tamaño	Diámetro exterior		Brida pulg.					Superficie elevada	Número	Plantilla de perforación		Presión LBS	Precio
		mm	D	J	b	h	m	g pulg.	I pulg.		K pulg.			
14BRIDAS006CH	2"	2.375	6.00	2.44	0.75	1.00	3.06	3.62	4	0.75	4.75	150	\$228.52	
		60.3	152.4	62.0	19.1	25.4	77.7	91.9	19.1	120.7				
14BRIDAS007CH	2.1/2"	2.875	7.00	2.94	0.88	1.12	3.56	4.12	4	0.75	5.50	150	\$345.68	
		73.0	177.8	74.7	22.4	28.4	90.4	104.6	19.1	139.7				
14BRIDAS010CH	6"	6.625	11.00	6.72	1.00	1.56	7.56	8.50	8	0.88	9.50	150	\$735.44	
		168.3	279.4	170.7	25.4	39.6	192.0	215.9	22.4	241.3				
14BRIDAS012CH	10"	10.75	16.00	10.88	1.19	1.94	12.00	12.75	12	1.00	14.25	150	\$1,651.84	
		273	406.4	276.4	30.2	49.3	304.8	323.9	25.4	362.0				
14BRIDAS013CH	12"	12.75	19.00	12.88	1.25	2.19	14.38	15.00	12	1.00	17.00	150	\$2,589.12	
		323.8	482.6	327.2	31.8	55.6	365.3	381	25.4	431.8				
14BRIDAS033CH	3"	3.50	8.25	3.57	1.12	1.69	4.62	5.00	8	0.88	6.62	300	\$571.88	
		88.9	209.6	90.7	28.4	42.9	117.3	127.0	22.4	168.1				
14BRIDAS034CH	4"	4.50	10.00	4.57	1.25	1.88	5.75	6.19	8	0.88	7.88	300	\$841.00	
		114	254.0	116.1	31.8	47.8	146.1	157.2	22.4	200.2				

Unidad: 1 pieza. Master: 1 pieza.

## Brida SLIP ON

Características: • Cumple con el estándar ASME B16.5 • Material: Acero forjado



Código	Tamaño	Diámetro exterior		Brida pulg.					Superficie elevada	Número	Plantilla de perforación		Presión LBS	Precio
		mm	D	J	b	h	m	g pulg.	I pulg.		K pulg.			
14BRIDAS049CH	1/2"	0.84	3.50	0.88	0.44	0.62	1.19	1.38	4	0.62	0.62	150	\$38.28	
		21.3	88.9	22.4	11.2	15.7	30.2	35.1	15.7	15.7				
14BRIDAS050CH	3/4"	1.05	3.88	1.09	0.50	0.62	1.50	1.69	4	0.62	0.62	150	\$51.04	
		26.7	98.6	27.7	12.7	15.7	38.1	42.9	15.7	15.7				
14BRIDAS051CH	1"	1.315	4.25	1.36	0.56	0.69	1.94	2.00	4	0.62	3.12	150	\$114.84	
		33.4	108.0	34.5	14.2	17.5	49.3	50.8	15.7	79.2				
14BRIDAS052CH	1.1/4"	1.66	4.62	1.70	0.62	0.81	2.31	2.50	4	0.62	0.62	150	\$71.92	
		42.2	117.3	43.2	15.7	20.6	58.7	63.5	15.7	15.7				
14BRIDAS053CH	1.1/2"	1.90	5.00	1.95	0.69	0.88	2.56	2.88	4	0.62	3.88	150	\$160.08	
		48.3	127.0	49.5	17.5	22.4	65.0	73.2	15.7	98.6				
14BRIDAS054CH	2"	2.375	6.00	2.44	0.75	1.00	3.06	3.62	4	0.75	4.75	150	\$226.20	
		60.3	152.4	62.0	19.1	25.4	77.7	91.9	19.1	120.7				
14BRIDAS055CH	2.1/2"	2.875	7.00	2.94	0.88	1.12	3.56	4.12	4	0.75	5.50	150	\$377.00	
		73.0	177.8	74.7	22.4	28.4	90.4	104.6	19.1	139.7				
14BRIDAS057CH	4"	4.50	9.00	4.57	0.94	1.31	5.31	6.19	8	0.75	7.5	150	\$668.16	
		114.3	228.6	116.1	23.9	33.3	134.9	157.2	19.1	190.5				
14BRIDAS058CH	6"	6.625	11.00	6.72	1.00	1.56	7.56	8.50	8	0.88	9.50	150	\$863.04	
		168.3	279.4	170.7	25.4	39.6	192.0	215.9	22.4	241.3				
14BRIDAS059CH	8"	8.625	13.5	8.72	1.12	1.75	9.69	10.62	8	0.88	11.75	150	\$1,393.16	
		219.1	342.9	221.5	28.4	44.5	246.1	269.7	22.4	298.5				
14BRIDAS060CH	10"	10.75	16.00	10.88	1.19	1.94	12.00	12.75	12	1.00	14.25	150	\$1,835.12	
		273	406.4	276.4	30.2	49.3	304.8	323.9	25.4	362.0				
14BRIDAS062CH	14"	14.0	21.00	14.14	1.38	2.25	15.75	16.25	12	1.12	18.75	150	\$4,085.52	
		355.6	533.4	359.2	35.1	57.2	400.1	412.8	28.4	476.3				
14BRIDAS063CH	16"	16.00	23.50	16.16	1.44	2.50	18.00	18.50	16	1.12	21.25	150	\$3,025.28	
		406.4	596.9	410.5	36.6	63.5	457.2	469.9	28.4	539.8				
14BRIDAS064CH	18"	18.0	25.00	18.18	1.56	2.69	19.88	21.00	16	1.25	22.75	150	\$3,303.68	
		457.2	635.0	461.8	39.6	68.3	505.0	533.4	31.8	577.9				
14BRIDAS065CH	20"	20.0	27.50	20.20	1.69	2.88	22.00	23.00	20	1.25	25.00	150	\$7,993.56	
		508	698.5	513.1	42.9	73.2	558.8	584.2	31.8	635.0				
14BRIDAS066CH	24"	24.0	32.00	24.25	1.88	3.25	26.12	27.25	20	1.38	29.50	150	\$5,868.44	
		609.6	812.8	616.0	47.8	82.6	663.4	692.2	35.1	749.3				
14BRIDAS075CH	2"	2.375	6.50	2.44	0.88	1.31	3.31	3.62	8	0.75	5.00	300	\$378.16	
		60.3	165.1	62.0	22.4	33.3	84.0	91.9	19.1	127.0				
14BRIDAS076CH	2.1/2"	2.875	7.50	2.94	1.00	1.50	3.94	4.12	8	0.88	5.88	300	\$378.16	
		73.0	190.5	74.7	25.4	38.1	100.1	104.6	22.4	149.4				
14BRIDAS077CH	3"	3.50	8.25	3.57	1.12	1.69	4.62	5.00	8	0.88	6.62	300	\$687.88	
		88.9	209.6	90.7	28.4	42.9	117.3	127.0	22.4	168.1				

Unidad: 1 pieza. Master: 1 pieza.

