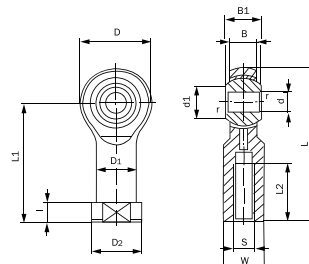


Cabeza de rótula hembra PHSB

- Características:
- Marca: GIM (G)
- Marca: IKO (I)

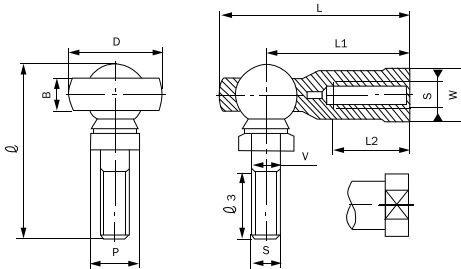
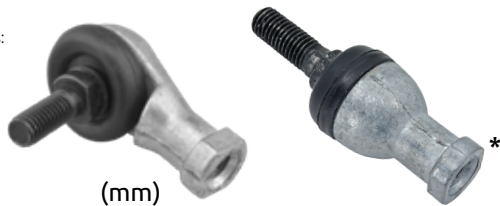


Código	Número	Cuerda	Peso	d	Rosca class 3B										Dimensiones pulg (mm)										Cap. dinámica de carga básica		Precio
					S	D	B	B1	d1	L	I	L1	L2	W	D1	D2	r	Diam. bola inch	CD lbf	CD lbf							
13PHSB3---IK	(I) PHSB-3	Derecha	14 g	0.1900	0.1900	0.625	0.250	0.312	0.306	1.375	0.187	1.062	0.562	0.312	0.312	0.406	0.12	7/16	780	2090	\$502.28						
13PHSB4---IK	(I) PHSB-4	Derecha	23 g	0.2500	0.2500	0.750	0.281	0.375	0.355	1.687	0.187	1.312	0.750	0.375	0.375	0.468	0.20	33/64	1030	3040	\$491.84						
13PHSB4D---TA	(G) PHSB-4	Derecha	23 g	(6.350)	(6.350)	(19.05)	(7.14)	(9.53)	(9.02)	(42.85)	(4.75)	(33.32)	(19.05)	(9.53)	(9.53)	(11.89)	(0.5)	(13.097)			\$102.08						
13PHSB4I---TA	(G) PHSB-4	Izquierda																			\$102.08						
13PHSB5---IK	(I) PHSB-5	Derecha	36 g	0.3125	0.3125	0.875	0.344	0.437	0.447	1.812	0.187	1.375	0.750	0.437	0.437	0.500	0.20	5/8	1530	3800	\$303.92						
13PHSB5D---TA	(G) PHSB-5	Derecha	36 g	(7.938)	(7.938)	(22.23)	(8.74)	(11.10)	(11.35)	(46.02)	(4.75)	(34.93)	(19.05)	(11.10)	(11.10)	(12.70)	(0.5)	(15.875)			\$105.56						
13PHSB5I---TA	(G) PHSB-5	Izquierda																			\$105.56						
13PHSB6---IK	(I) PHSB-6	Derecha	59 g	0.3750	0.3750	1.000	0.406	0.500	0.517	2.125	0.250	1.625	0.937	0.562	0.562	0.687	0.20	23/32	2080	4980	\$506.92						
13PHSB6D---TA	(G) PHSB-6	Derecha	59 g	(9.525)	(9.525)	(25.40)	(10.31)	(12.70)	(13.13)	(53.98)	(6.35)	(41.28)	(23.80)	(14.27)	(14.27)	(17.45)	(0.5)	(18.256)			\$132.24						
13PHSB6I---TA	(G) PHSB-6	Izquierda																			\$132.24						
13PHSB7---IK	(I) PHSB-7	Derecha	82 g	0.4375	0.4375	1.125	0.437	0.562	0.586	2.375	0.250	1.812	1.062	0.625	0.625	0.750	0.20	13/16	2520	6020	\$639.16						
13PHSB7D---TA	(G) PHSB-7	Derecha	82 g	(11.112)	(11.112)	(28.58)	(11.10)	(14.27)	(14.88)	(60.33)	(6.35)	(46.02)	(26.97)	(15.88)	(15.88)	(19.05)	(0.5)	(20.638)			\$129.92						
13PHSB7I---TA	(G) PHSB-7	Izquierda																			\$146.16						
13PHSB8---IK	(I) PHSB-8	Derecha	132 g	0.5000	0.5000	1.312	0.500	0.625	0.698	2.781	0.250	2.125	1.187	0.750	0.750	0.875	0.20	15/16	3330	8370	\$776.04						
13PHSB8D---TA	(G) PHSB-8	Derecha	132 g	(12.700)	(12.700)	(33.32)	(12.70)	(15.88)	(17.73)	(70.64)	(6.35)	(53.98)	(30.15)	(19.05)	(19.05)	(22.23)	(0.5)	(28.575)			\$190.24						
13PHSB8I---TA	(G) PHSB-8	Izquierda																			\$190.24						
13PHSB10---IK	(I) PHSB-10	Derecha	191 g	0.6250	0.6250	1.500	0.562	0.750	0.839	3.250	0.312	2.500	1.500	0.875	0.875	1.000	0.20	1.1/8	4500	9050	\$923.36						
13PHSB10D---TA	(G) PHSB-10	Derecha	191 g	(15.875)	(15.875)	(38.10)	(14.27)	(19.05)	(21.31)	(82.55)	(7.92)	(63.50)	(38.10)	(22.23)	(22.23)	(25.40)	(0.5)	(28.575)			\$276.08						
13PHSB10I---TA	(G) PHSB-10	Izquierda																			\$229.68						
13PHSB12---IK	(I) PHSB-12	Derecha	286 g	0.7500	0.7500	1.750	0.687	0.875	0.978	3.750	0.312	2.875	1.750	1.000	1.000	1.125	0.20	1.5/16	6410	12700	\$1,387.36						
13PHSB12D---TA	(G) PHSB-12	Derecha	286 g	(19.050)	(19.050)	(44.45)	(17.45)	(22.23)	(24.84)	(95.25)	(7.92)	(73.03)	(44.45)	(25.40)	(25.40)	(28.58)	(0.5)	(33.338)			\$538.24						
13PHSB12I---TA	(G) PHSB-12	Izquierda																			\$284.20						
13PHSB16D25TA	(G) PHSB-16	Derecha	998 g	1.0000	1.0000	2.750	1.000	1.375	1.269	5.500	0.436	4.125	2.125	1.500	1.500	1.750	0.20	1.7/8	13300	19500	\$1,035.88						
13PHSB16I25TA	(G) PHSB-16	Izquierda	998 g	(25.400)	(25.400)	(69.85)	(25.40)	(34.93)	(32.23)	(139.70)	(11.07)	(104.78)	(53.98)	(38.10)	(38.10)	(44.45)	(0.5)	(47.625)			\$1,035.88						
13PHSB16L25TA	(G) PHSB-16	Izquierda		1.000	1.25	2.750	1.000	1.375	1.269	5.500	0.436	4.125	2.125	1.500	1.500	1.750	0.20	1.7/8			\$786.48						
13PHSB16D26TA	(G) PHSB-16	Derecha		(25.40)	(25.40)	(69.85)	(25.40)	(34.93)	(32.23)	(139.70)	(11.07)	(104.8)	(53.98)	(38.10)	(38.10)	(44.45)	(0.5)	(47.625)			\$876.96						

Unidad: 1 pieza Master: 1 pieza

Cabeza de rótula con perno LHS

- Características:
- Marca: IKO



Código	Número	Peso (g)	Rosca	V	D	B	L	Dimensiones					Cap. estática de carga básica (kgf)			Precio
								L1	L2	W	I	P	I3			
13LHS5---IK	LHS-5D	22	M5X0.8	5	17	6	35.5	27	16	9	30.5	8	11	210	\$479.08	
13LHS6---IK	LHS-6D (RBL-6D)	32	M6X1	6	19.5	6.75	39.7	30	16	11	36.5	10	14	330	\$484.88	
13LHS8---IK	LHS-8D	60	M8X1.25	8	24	9	48	36	19	14	44	11	15	490	\$561.44	
13LHS8---TA	LHS-8D (RBL-8D)	62	M8X1	6.9	23.6	9	49	37.5	25.1	13.6	42.2	10	16	490	\$66.12	
13LHS10---IK	LHS-10D (RBL-10D)	102	M10X1.5	10	28	10.75	57	43	23	17	52.5	13	18	770	\$675.12	
13LHS10---TA	LHS-10	91	M10X1.5	10.3	26.8	10.4	57	40.3	29	16.2	49	13	20	770	\$110.20	
13LHS12---IK	LHS-12D	160	M12X1.5	12	32	12	66	50	27	19	61	17	20	1260	\$773.72	
13LHS14---IK	LHS-14D	227	M14X2	14	36	13.5	75	57	30	22	69	17	22	1490	\$1,059.08	

Unidad: 1 pieza Master: 1 pieza

- Características:
- Marca: GIM

Código	Número	Peso (g)	Rosca	V	D	B	L	Dimensiones					Cap. estática de carga básica (kgf)			Precio
								L1	L2	W	I	P	I3			
13RBL5---TA	RBL-5D (LHS-5)	22	M5X0.8	5	17	7	35.5	27	16	9	30.5	8	11	210	\$52.20	
13RBL6---TA	RBL-6D (LHS-6)	32	M6X1	6	19.5	9	39.7	30	16	11	36.5	10	14	330	\$67.28	
13RBL8---TA	RBL-8D (LHS-8)	60	M8X1.25	8	24	11	48	36	19	14	44	11	15	490	\$78.88	
13RBL10---TA	RBL-10D (LHS-10)	102	M10X1.5	10	28	15	57	43	23	17	52.5	13	18	770	\$88.16	
13RBL12---TA	RBL-12D (LHS-12)	160	M12X1.75	12	32	15	66	50	27	19	61	17	20	1260	\$119.48	
13RBL14---TA	RBL-14D (LHS-14)	227	M14x2	14	36	18	75	57	30	22	69	17	22	1490	\$163.56	
13SQZ14---TA*	SQZ14-2RS	227	M14x2	20	38	15	109	45	25	25	70	36	31	2975	\$163.56	

Unidad: 1 pieza Master: 1 pieza

